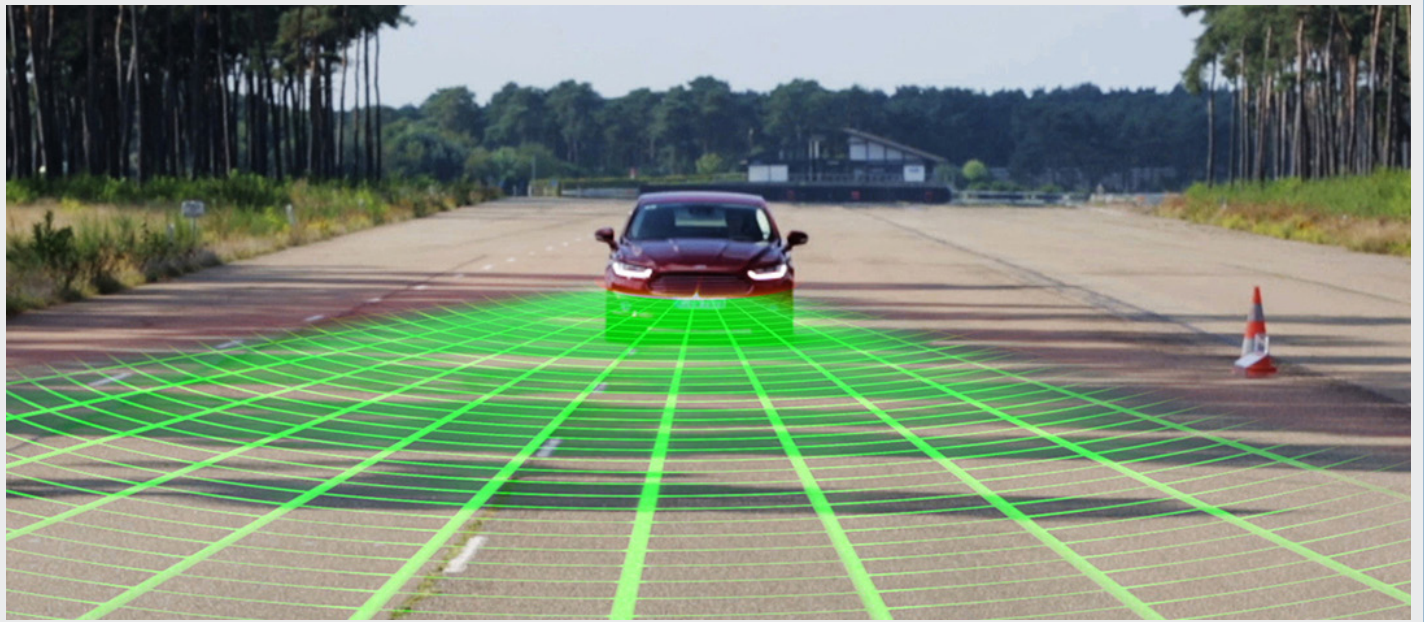
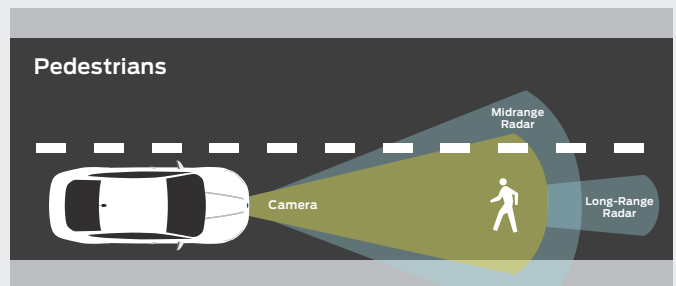
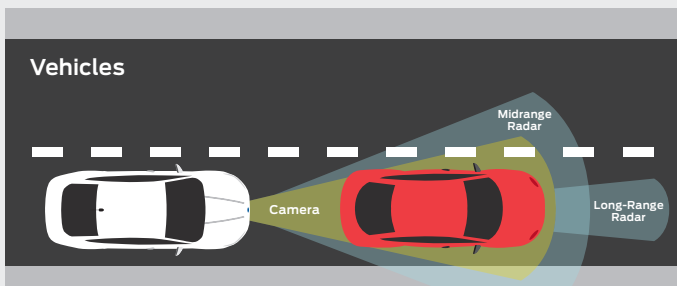




Pre-Collision Assist with Pedestrian Detection



Functionality



Capabilities

Pre-Collision Assist with Pedestrian Detection uses radar and camera technology to scan the roadway ahead and, if a collision risk with a vehicle or pedestrian is detected, provides a warning to the driver. If the driver does not respond in time, the system can automatically apply up to full braking force to help reduce the severity of or even eliminate some frontal collisions.

In daylight and clear weather conditions, the new technology may detect people in or near the road ahead, or pedestrians crossing the vehicle's path. If a pedestrian is detected in front of the car and a collision is imminent, the driver first receives an audible and visual warning. Should the driver not respond, the system can improve brake responsiveness by reducing the gap between

brake pads and discs. If there is still no response from the driver, the brakes are applied automatically and vehicle speed is reduced.

The system processes information collected from a windshield-mounted camera and radar located near the bumper; it then checks the information against a database of pedestrian shapes to help distinguish people from typical roadside scenery and objects.

While the new system may be especially helpful in unexpected situations, it does not replace the driver and has limitations, including nighttime, low and harsh lighting conditions, vehicles moving in a different direction and certain weather conditions.